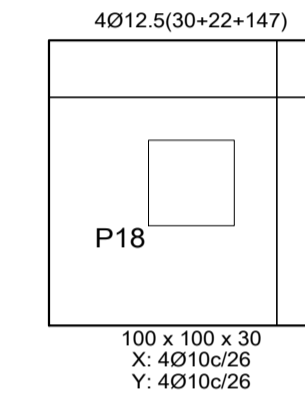
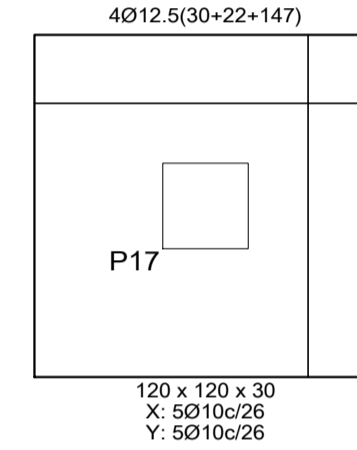
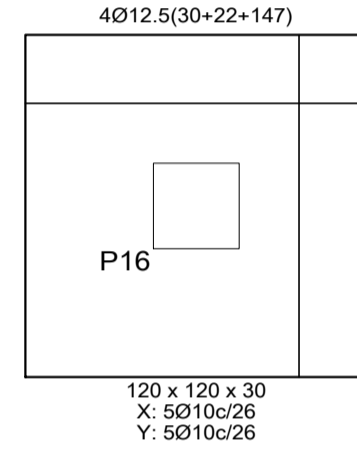
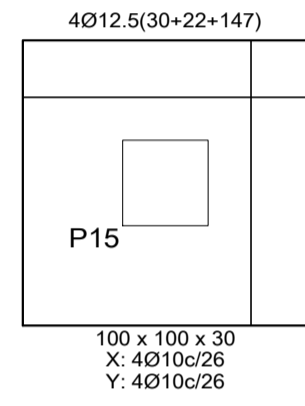
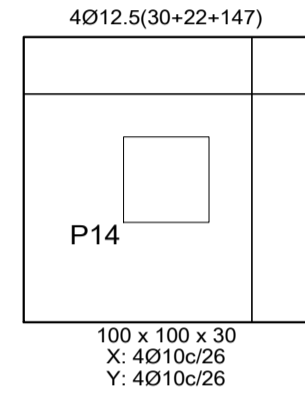
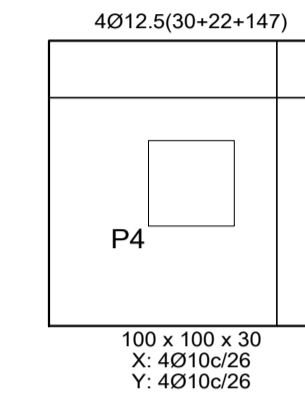
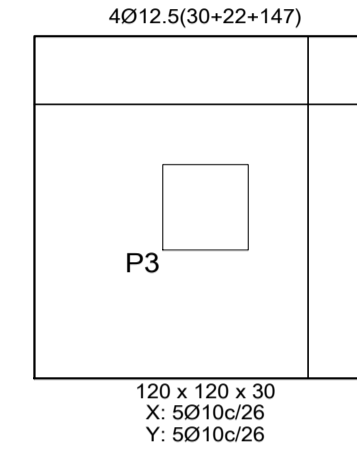
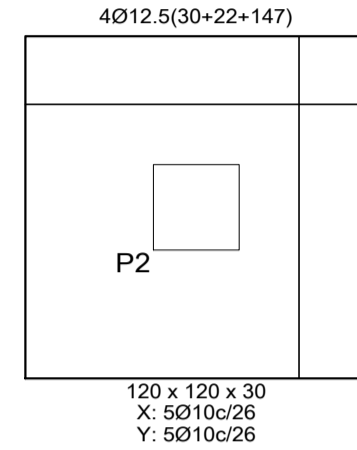
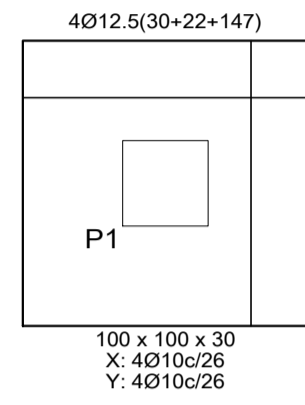
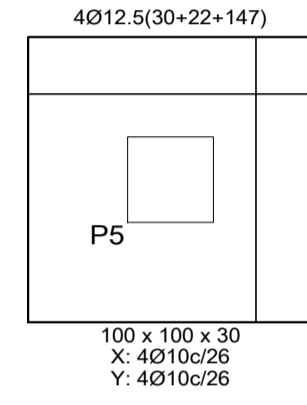
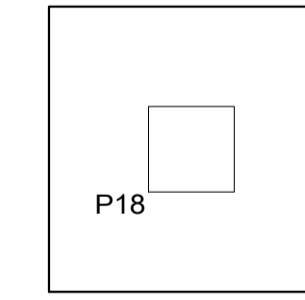
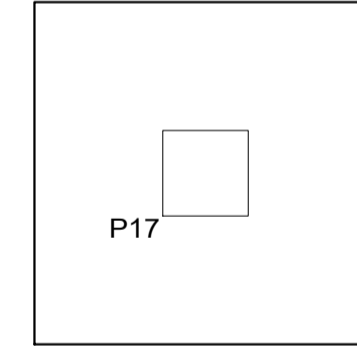
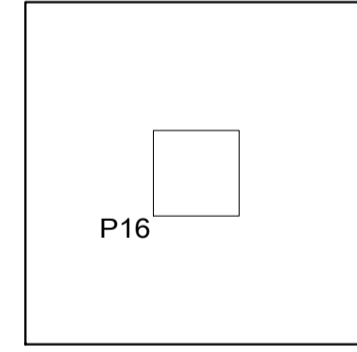
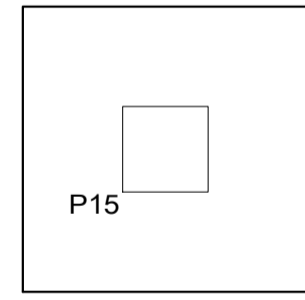
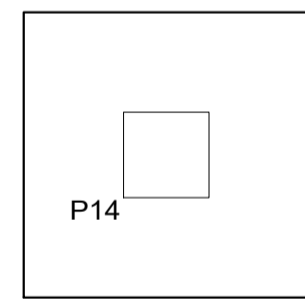
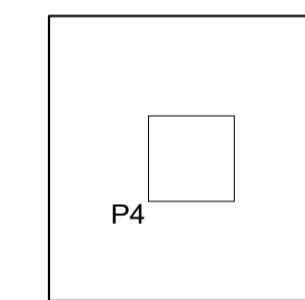
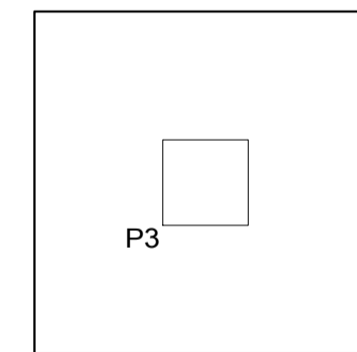
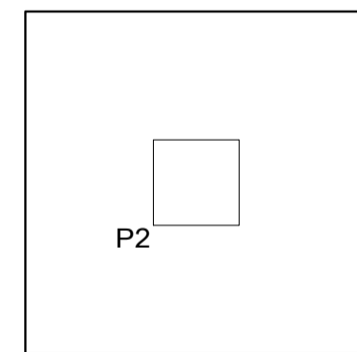
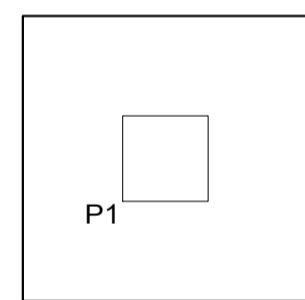
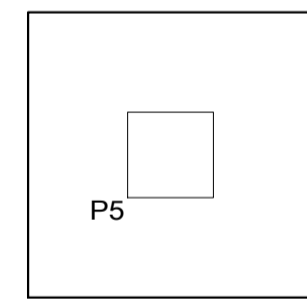


Elemento	Pos.	Diam.	Q.	Dob.	Reta	Dob.	Comp.	Total	CA-50	CA-60
		(cm)		(cm)	(cm)	(cm)	(cm)	(cm)	(kg)	(kg)
P1=P4+P5+P14+P15+P18	1	Ø10	4	11	89	11	111	444	2.7	
	2	Ø10	4	11	89	11	111	444	2.7	
	3	Ø12.5	4	30	169		199	796	7.7	
								Total+10%:	14.4	
								(x4):	86.4	
P2=P3+P16+P17	4	Ø10	5	11	109	11	131	655	4.0	
	5	Ø10	5	11	109	11	131	655	4.0	
	6	Ø12.5	4	30	169		199	796	7.7	
								Total+10%:	17.3	
								(x4):	69.2	
								Ø10:	70.6	0.0
								Ø12.5:	85.0	0.0
								Total:	155.6	0.0

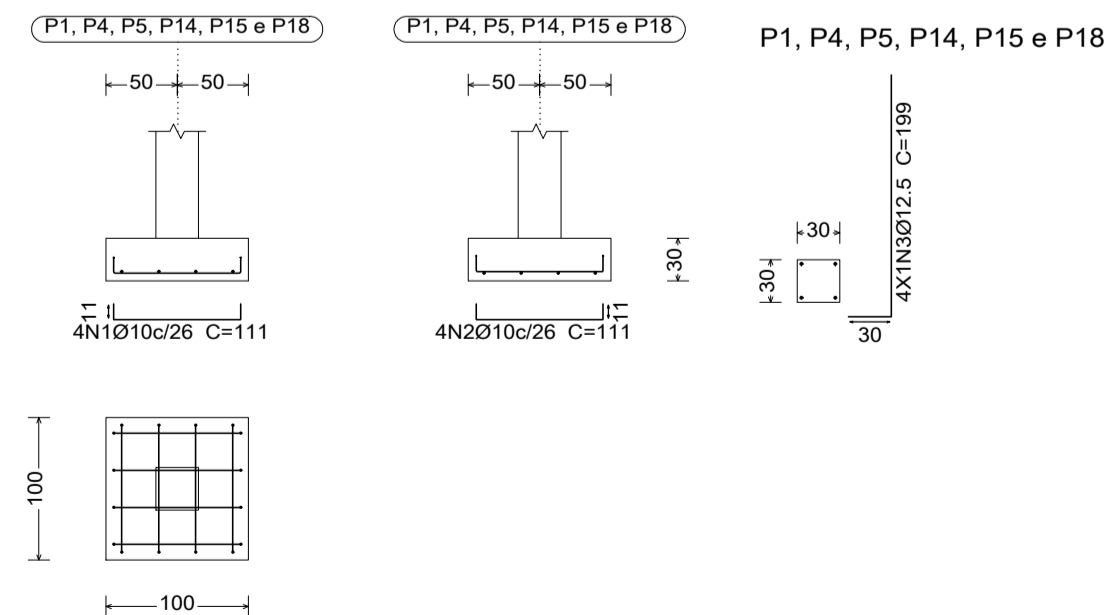
SAPATAS
Fundação
Concreto: C25, em geral
Escala: 1:25



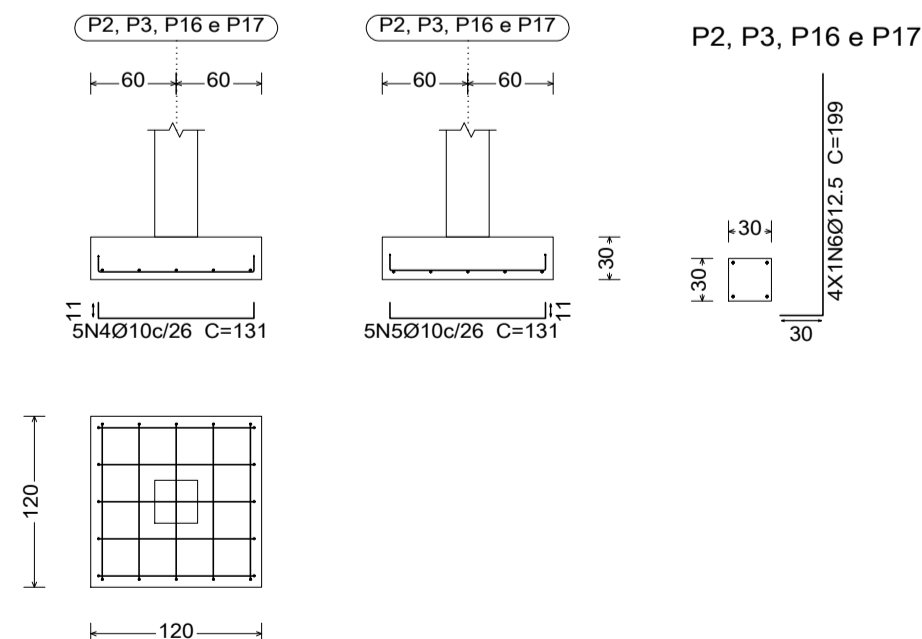
SAPATAS
Detalhamento fundação
Concreto: C25, em geral
Escala: 1:25



P1, P4, P5, P14, P15 e P18



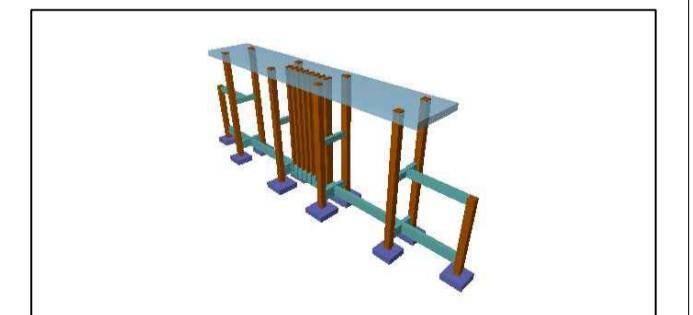
P2, P3, P16 e P17



Arranques
nØxx(aa+bb+cc)
10c
aa | bb

QUADRO DE ELEMENTOS DE FUNDAÇÃO				
Referências	Dimensões (cm)	Altura (cm)	Armadura inf. X	Armadura inf. Y
P1, P4, P5, P14, P15 e P18	100x100	30	4Ø10c/26	4Ø10c/26
P2, P3, P16 e P17	120x120	30	5Ø10c/26	5Ø10c/26

Resumo Aço SAPATAS	Comp. total (m)	Peso+10% (kg)	Total
CA-50	105.7	72	
	79.6	84	156



Projeto: 001	PARQUE DE EVENTOS PREF. RENATO MANOEL	Data: 11/01/2024
Local: CA-50	PORTAL DO PAQUE DE EVENTOS PREF. RENATO MANOEL - MARIAPÁ DE MINAS	
Nome:	PREFEITO VAGNER FONSECA COSTA - MARIAPÁ DE MINAS	
Des.no.:	Planta: DETALHES DAS SAPATAS FUNDAÇÕES EM SAPATAS	
Autor: ENG. CIVIL MILTON SALGADO FILHO	A1 - 02.05	